

REFERENCES

1. DEED UNDER POWER OF SALE DATED: FEBRUARY 5, 2002; BETWEEN GEORGIA OSTEOPATHIC INSTITUTE, INC. F/N/A/ GEORGIA OSTEOPATHIC HOSPITAL, INC. AS ATTORNEY-IN-FACT FOR WALTER G. MAYFIELD, D.O. AND MICHAEL B. SCHNAPP, D.O., AS PARTY OF THE FIRST PART; AND GEORGIA OSTEOPATHIC INSTITUTE, INC. AS PARTY OF THE SECOND PART; RECORDED IN DEED BOOK 12993, PAGE 670, DEKALB COUNTY RECORDS.

SURVEY DATA

THE FIELD DATA FROM WHICH THIS PLAT IS BASED WAS COMPLETED ON OCT. 19, 2007 AND HAS A CLOSURE PRECISION OF ONE FOOT IN 26,629 FEET AND AN ANGULAR ERROR OF 6.4" PER ANGLE POINT. DATA WAS ADJUSTED USING THE COMPASS RULE.

THIS PLAT HAS BEEN CALCULATED FOR CLOSURE AND FOUND TO BE ACCURATE WITHIN ONE FOOT IN 431,681 FEET - 1.0606 AC.

EQUIPMENT USED TO OBTAIN FIELD DATA: TOPCON GPT-1003 & A STEEL TAPE.

NO PART OF THIS PROPERTY LIES WITHIN A F.I.R.M. FLOOD HAZARD AREA AS PER DEKALB COUNTY COMMUNITY PANEL No. 13089C0178 H; DATED: MAY 07, 2001.

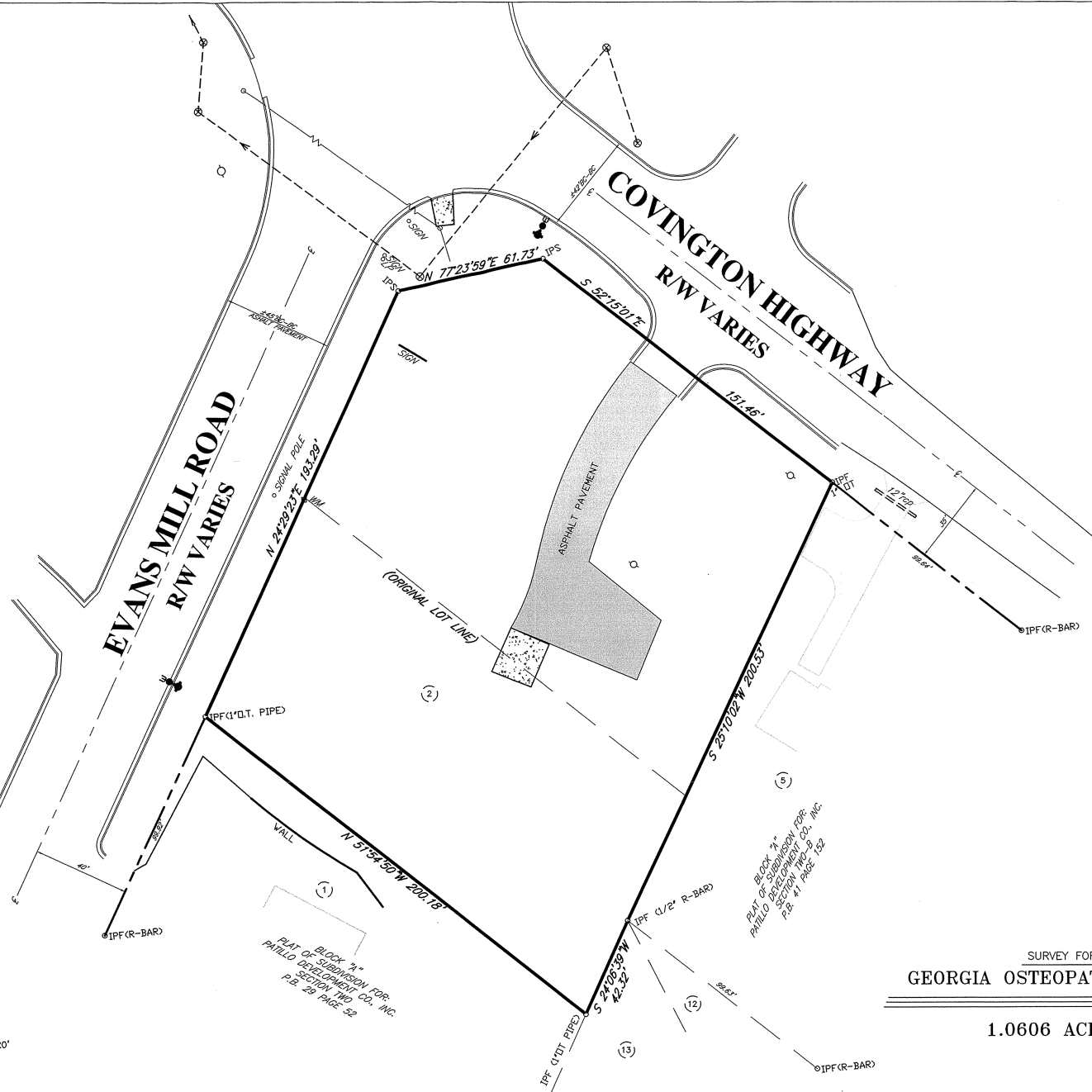
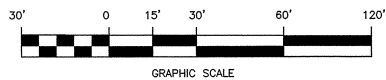
(IPS) IRON PINS SET WILL BE 1/2" R-BAR

BEARINGS ON THIS PLAT ROTATED 00°14'01" COUNTERCLOCKWISE FROM REFERENCE BEARING TO TIE TO STATE PLANE COORDINATE SYSTEM.

GRAPHIC LEGEND

- C.B. C.B. D.I. PIPE J.B. H.W.
- ⊙ TELE. M.H. F.H. □ WATER METER
- ⊙ S.S. M.H. UTIL. POLE △ WATER VALVE

- LEGEND**
- ⊙ TEST M.H. ⊠ R/W MONUMENT
 - I.P.F. = IRON PIN FOUND F.H. = FIRE HYDRANT
 - I.P.S. = IRON PIN SET C.B. = CATCH BASIN
 - P.L. = PROPERTY LINE H.W. = HEADWALL
 - C.L. = CENTER LINE D.I. = DROP INLET
 - B.L. = BUILDING LINE D.E. = DRAINAGE ESMT.
 - L.L.L. = LAND LOT LINE S.E. = SEWER ESMT.
 - R/W = RIGHT OF WAY C.E. = CONSTRUCTION ESMT.



SURVEY FOR:
GEORGIA OSTEOPATHIC INSTITUTE

1.0606 ACRES



McNally & Patrick, Inc. 1505 HWY. 29 SOUTH - LAWRENCEVILLE, GA. 30044
PHONE: (770) 963-8520 FAX: (770) 963-3984

No.	REVISIONS	DATE

LAND LOT 137- 16th DISTRICT SCALE 1"=30'
DEKALB COUNTY, GA. DATE: 10-22-07